

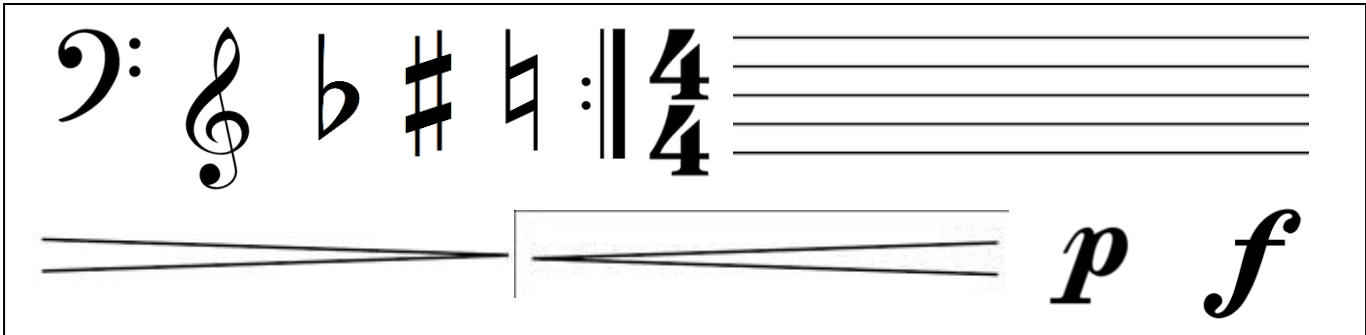
Name: \_\_\_\_\_

Date: \_\_\_\_\_

Period: \_\_\_\_\_

## Music Theory Pre-Test

Draw the symbol that matches the phrase below.



1. Treble Clef \_\_\_\_\_

2. Repeat Sign \_\_\_\_\_

3. Staff \_\_\_\_\_

4. Sharp \_\_\_\_\_

5. Flat \_\_\_\_\_

6. Crescendo \_\_\_\_\_

7. Decrescendo \_\_\_\_\_

8. Natural \_\_\_\_\_

9. Bas Clef \_\_\_\_\_

10. Time Signature \_\_\_\_\_

11. Piano \_\_\_\_\_

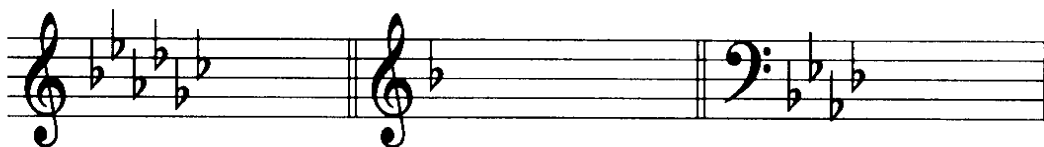
12. Forte \_\_\_\_\_

Name the notes in treble clef on the lines provided.



13. \_\_\_ 14. \_\_\_ 15. \_\_\_ 16. \_\_\_ 17. \_\_\_ 18. \_\_\_ 19. \_\_\_ 20. \_\_\_ 21. \_\_\_ 22. \_\_\_ 23. \_\_\_

Name the key signatures below.

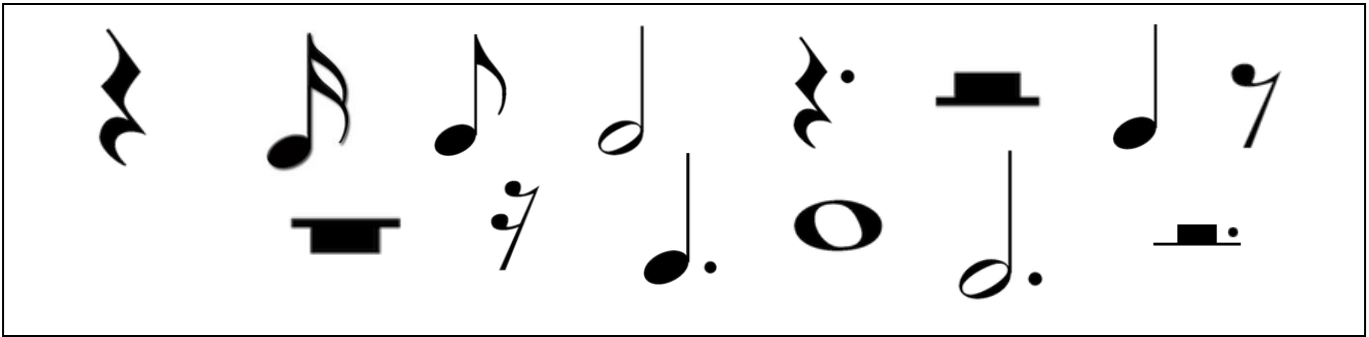


24. \_\_\_ Major

25. \_\_\_ Major

26. \_\_\_ Major

Draw the symbol that matches the phrase below.



- 27. Half Note \_\_\_\_\_
- 28. Quarter Note \_\_\_\_\_
- 29. Quarter Rest \_\_\_\_\_
- 30. Eighth Note \_\_\_\_\_
- 31. Dotted Half Rest \_\_\_\_\_
- 32. Sixteenth Note \_\_\_\_\_
- 33. Whole Note \_\_\_\_\_
- 34. Half Rest \_\_\_\_\_
- 35. Whole Rest \_\_\_\_\_
- 36. Dotted Quarter Note \_\_\_\_\_
- 37. Eighth Rest \_\_\_\_\_
- 38. Dotted Quarter Rest \_\_\_\_\_
- 39. Dotted Half Note \_\_\_\_\_
- 40. Sixteenth Rest \_\_\_\_\_

Name the intervals below.

A musical staff with a treble clef and a key signature of one flat (Bb). The staff contains nine intervals, each labeled with a number and a blank line for the answer. The intervals are: 41. C4 to D4, 42. D4 to E4, 43. E4 to F#4, 44. F#4 to G4, 45. G4 to A4, 46. A4 to Bb4, 47. Bb4 to C5, 48. C5 to D5, and 49. D5 to E5.

41. — 42. — 43. — 44. — 45. — 46. — 47. — 48. — 49. —

50. What does legato mean? \_\_\_\_\_